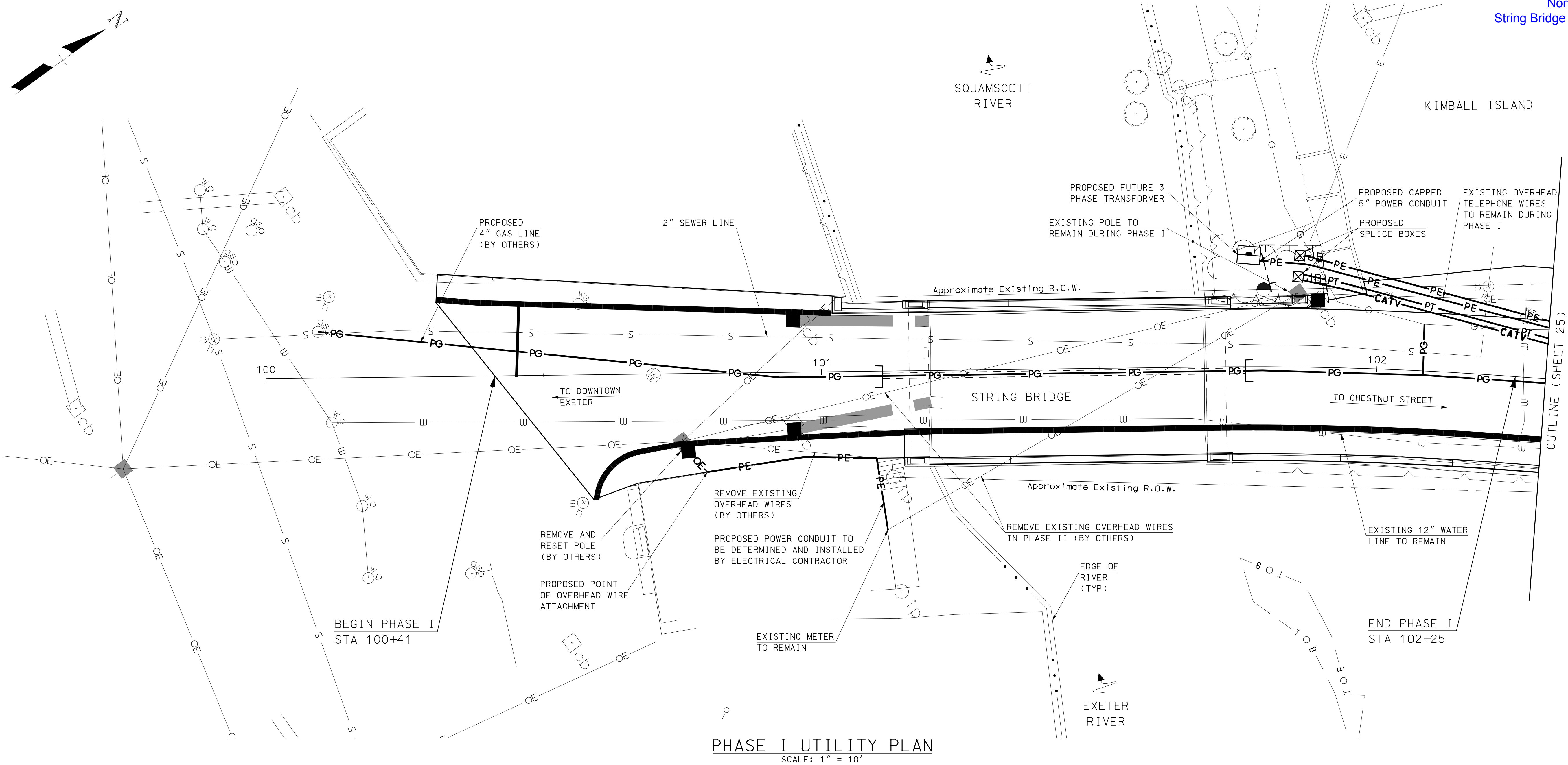


3/13/2016
11:44:56 AM
K:\095222\2-CADD\BRC\B\Site\095222Util-Phs.dgn



PHASE I UTILITY PLAN
SCALE: 1" = 10'

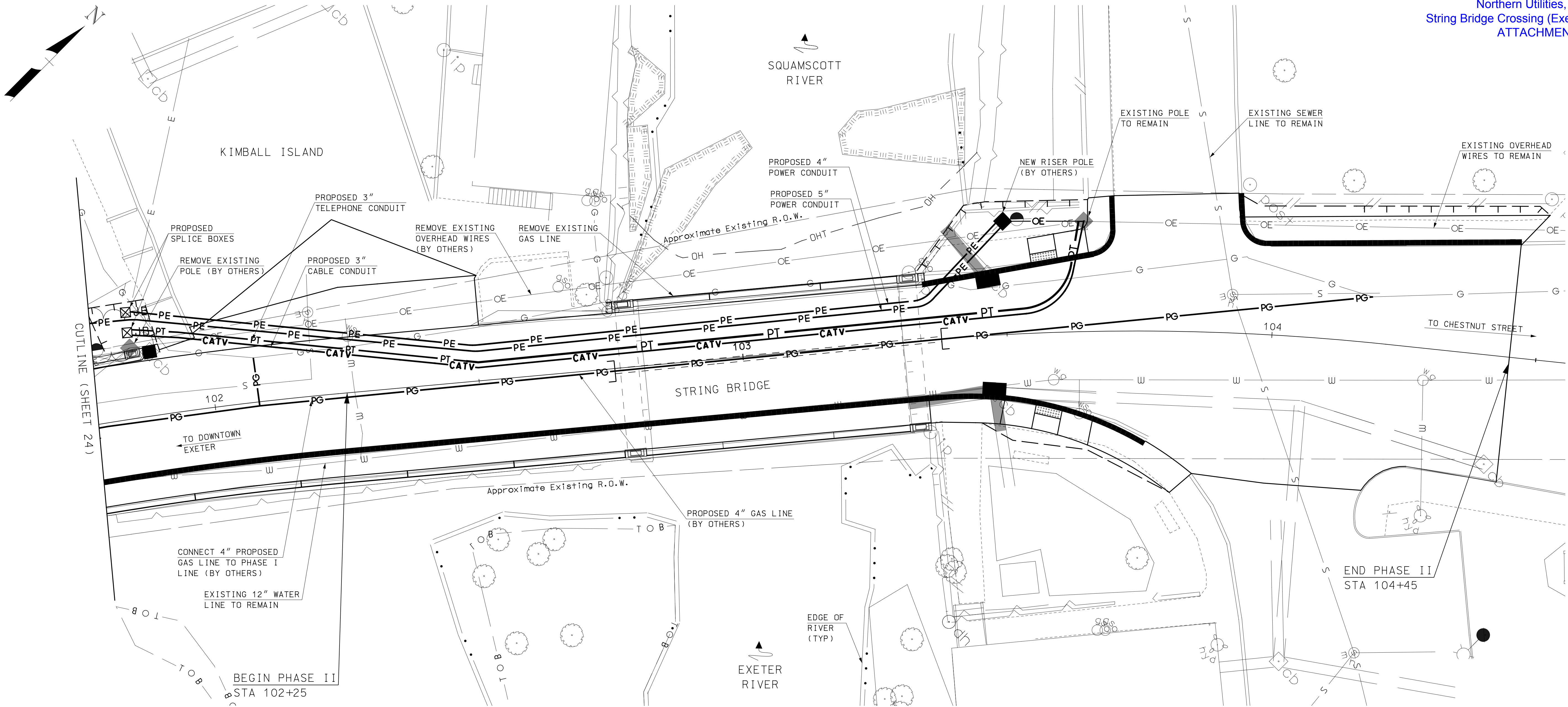
NOTES

1. FOR UTILITY COORDINATION NOTES SEE SHEET 28.
2. FOR FINAL UTILITY LOCATIONS SEE SHEETS 26 AND 27.

DG 16-XXX
Northern Utilities, Inc.
String Bridge Crossing (Exeter)
ATTACHMENT A

ENGINEER									
This document is prepared as an instrument of service and shall remain the property of Hoyle, Tanner. It may not be used, reproduced, disseminated or transferred in any manner, including electronically, for any other purpose than this project, without the written permission of Hoyle, Tanner.									
REV.		DESCRIPTION		DRW. CHG. BY		DATE			
MARCH 2016									
DESIGN BY:		JAS							
DRAWN BY:		TAG							
CHKD. BY:		STJ							
SCALE:		AS SHOWN							
<div>Hoyle, Tanner & Associates, Inc.</div> <div>150 Dow Street, Manchester, NH 03101-1227 Tel (603) 669-5555 • Fax (603) 669-4168 www.hoyletanner.com</div>									
<div>TOWN OF EXETER EXETER, NEW HAMPSHIRE STRING BRIDGE OVER EXETER RIVER</div> <div>CONSTRUCTION UTILITY PHASING PLAN (1 OF 2)</div>									
PROJECT NO.:				095222					
FILE NAME:				095222Util-Phs					
MODEL NAME:				095222UtilPh1					
SHEET NO.									
24									
SHEET 24 OF 42									

3/13/2016 11:44:57 AM K:\095222\2-CADD\BRC\B-Site\095222-Util-Phs.dgn



PHASE II UTILITY PLAN
SCALE: 1" = 10'

NOTES

- FOR UTILITY COORDINATION NOTES SEE SHEET 28.
- FOR FINAL UTILITY LOCATIONS SEE SHEETS 26 AND 27.

DG 16-XXX
Northern Utilities, Inc.
String Bridge Crossing (Exeter)
ATTACHMENT A

ENGINEER				
REV.	DESCRIPTION	DRW	CHKD	DATE
MARCH 2016	DESIGN BY: JAS			
	DRAWN BY: TAG			
	CHKD. BY: STJ			
	SCALE: AS SHOWN			
This document is prepared as an instrument of service and shall remain the property of Hoyle, Tanner. It may not be used, reproduced, disseminated or transferred in any manner, including electronically, for any other purpose than this project, without the written permission of Hoyle, Tanner.				
<div>Hoyle, Tanner & Associates, Inc.</div> <div>150 Dow Street, Manchester, NH 03101-1227 Tel (603) 669-5555 - Fax (603) 669-4168 www.hoyletanner.com</div>				
TOWN OF EXETER EXETER, NEW HAMPSHIRE STRING BRIDGE OVER EXETER RIVER CONSTRUCTION UTILITY PHASING PLAN (2 OF 2)				
PROJECT NO.: 095222 FILE NAME: 095222Util-Phs MODEL NAME: 095222UtilPh2				
SHEET NO. 25 SHEET 25 OF 42				



150 Dow Street, Manchester, NH 03101-1227
Tel (603) 669-5555 · Fax (603) 669-4168
www.hoyletanner.com

FINAL UTILITY PLAN (2 OF 2)

SHEET NO.

SHEET 27 OF 42

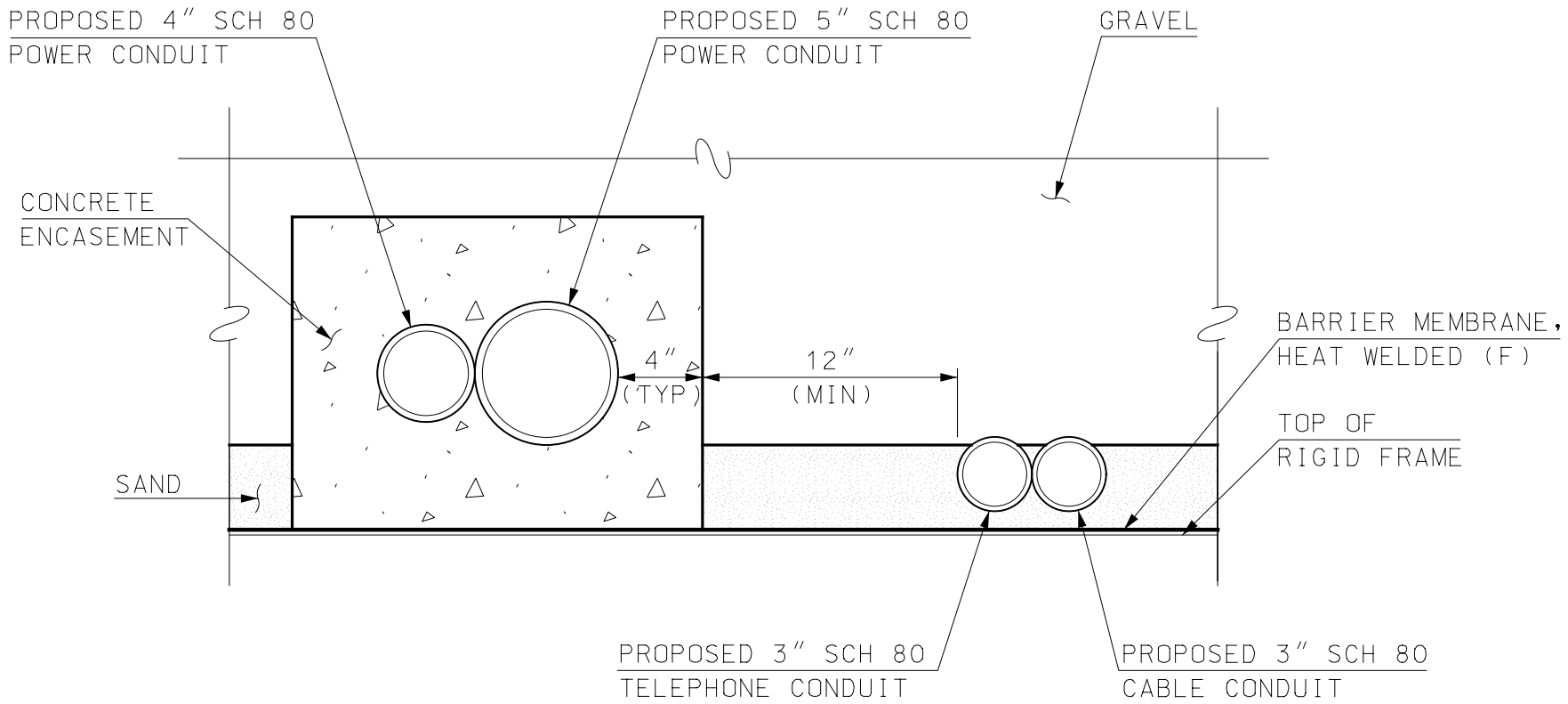
	REV	DESCRIPTION	BY	DATE
MARCH 2016				
DESIGN BY:	JAS			
DRAWN BY:	TAG			
CHKD. BY:	STJ			
SCALE:	AS SHOWN			

This document is prepared as an instrument of service and shall remain the property of Hoyle, Tanner. It may not be used, reproduced, disseminated or transferred in any manner, including electronically, for any other purpose than this project, without the written permission of Hoyle, Tanner.

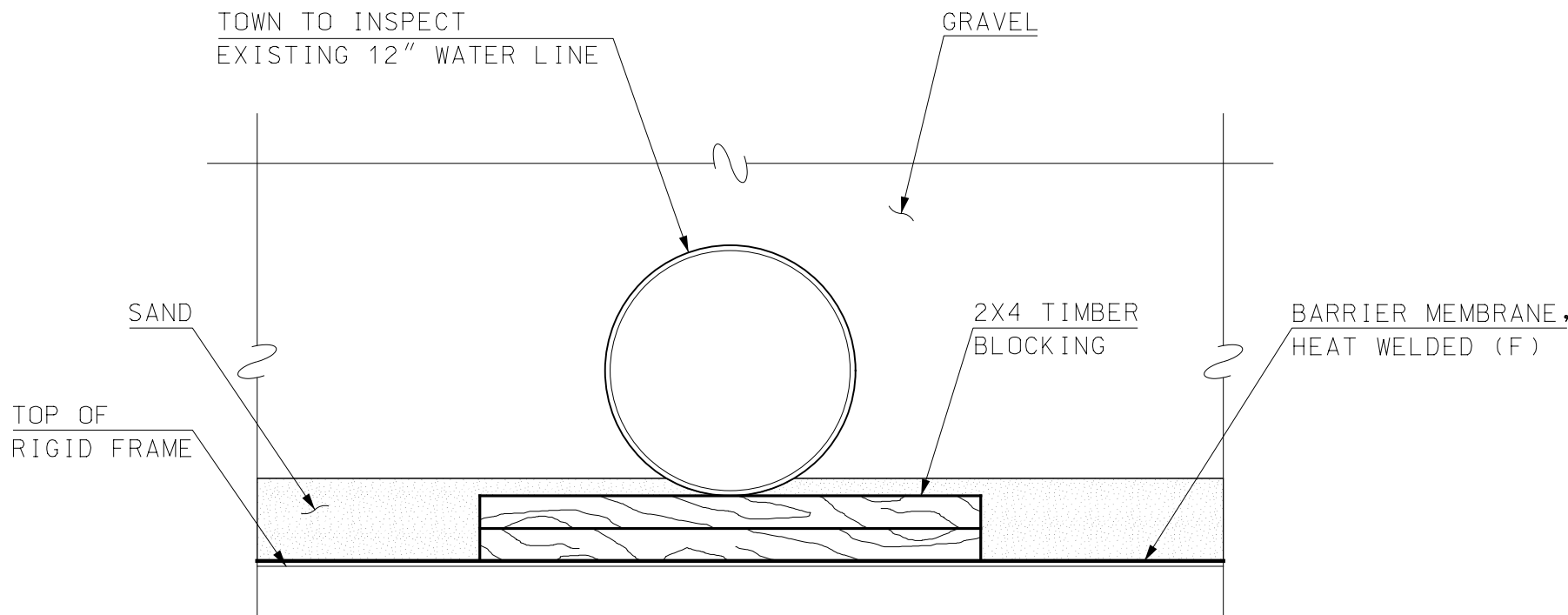
This document is prepared as an instrument of service and shall remain the property of Hoyle, Tanner. It may not be used, reproduced, disseminated or transferred in any manner, including electronically, for any other purpose than this project, without the written permission of Hoyle, Tanner.

1. FOR UTILITY COORDINATION NOTES SEE SHEET 28.
2. FOR UTILITY PHASING PLANS SEE SHEETS 24 AND 25.

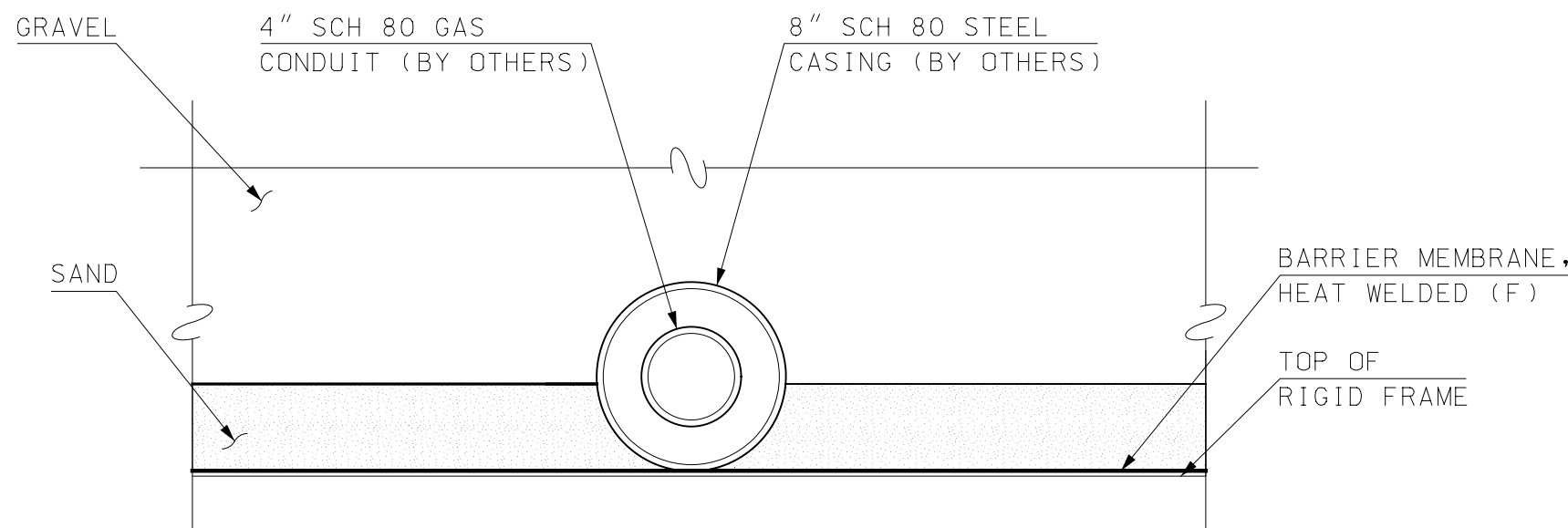
3/13/2016 11:44:59 AM K:\095222\2-CADD\BRC-Details\095222\Util-Dtls.dgn



JOINT TRENCH OVER EAST BRIDGE
SCALE: 1 1/2" = 1'-0"



EXISTING WATER LINE
SCALE: 1 1/2" = 1'-0"



PROPOSED GAS LINE
SCALE: 1 1/2" = 1'-0"

NOTES

1. LOCATE GAS LINE ON BOTH BRIDGES TO MAXIMIZE COVER OVER STEEL CASING.
2. STEEL CASING IS ONLY REQUIRED WITHIN THE LIMITS OF THE BRIDGES.

UTILITY COORDINATION NOTES

1. OVERHEAD UTILITIES ARE PRESENT WITHIN THE PROJECT SITE AND INCLUDE POWER, TELEPHONE AND CABLE:

OVERHEAD OWNER UTILITY INFORMATION:

UNITIL CORPORATION (POWER)
SERGE LAPRISE
PHONE: (603) 777-5512
EMAIL: LAPRISE@UNITIL.COM

FAIRPOINT COMMUNICATIONS
JOSEPH CONSIDINE
PHONE: (603) 427-5525
EMAIL: JCONSIDINE@FAIRPOINT.COM

COMCAST
DAN ROBERTS
PHONE: (603) 231-1128
EMAIL: DAN@CATVCONSTRUCTION.COM

FIREWIRE
LT. PAUL MORIN
PHONE: (603) 773-6133

2. UNDERGROUND UTILITIES ARE PRESENT WITHIN THE PROJECT SITE AND INCLUDE WATER, SEWER AND GAS:

UNDERGROUND UTILITY OWNER INFORMATION:

WATER
TOWN OF EXETER
JENNIFER MATES, ASSISTANT TOWN ENGINEER
PHONE: (603) 418-6431
EMAIL: JMATES@EXETERNH.GOV

SEWER
JEFF TURNER
PHONE: (603) 770-0721
EMAIL: JEFF@NHGREENBEAN.COM

UNITIL CORPORATION (GAS)
PHIL JOHNSON, CONSTRUCTION SUPERVISOR-NH
PHONE: (603) 294-5157
EMAIL: JOHNSON@UNITIL.COM

3. THE PROPOSED UTILITY RELOCATIONS SHOWN ARE CONCEPTUAL AND BASED ON PRELIMINARY COORDINATION WITH UNITIL (POWER), FAIRPOINT, COMCAST, TOWN OF EXETER, UNITIL (GAS) AND HOYLE, TANNER. THE CONTRACTOR SHALL BE FAMILIAR AND TAKE NECESSARY PRECAUTIONS WITH THESE UTILITIES DURING CONSTRUCTION. CONTRACTOR SHALL BE RESPONSIBLE FOR CONTINUATION OF COORDINATION WITH UTILITY COMPANIES FOR THE TEMPORARY AND PERMANENT RELOCATIONS. ALL COST FOR THIS COORDINATION SHALL BE INCLUDED IN ITEM 692, MOBILIZATION.
4. THE OVERHEAD UTILITIES WITHIN PROJECT LIMITS ARE TO BE RELOCATED UNDERGROUND. ALL REMOVED UTILITIES SHALL BE SALVAGED TO OWNER IDENTIFIED IN NOTES 1 AND 2 ABOVE.
5. FOR UTILITY PHASING PLANS SEE SHEETS 25 AND 26.
6. FOR FINAL UTILITY LOCATIONS SEE SHEETS 27 AND 28.
7. ALL COSTS ASSOCIATED WITH MISCELLANEOUS TREE TRIMMING AND CLEARING FOR PERMANENT UTILITY RELOCATIONS IS SUBSIDIARY TO THE CONTRACT.
8. ALL COSTS FOR RELOCATING OVERHEAD POWER UNDERGROUND SHALL BE INCLUDED IN ITEM 1008.41, ALTERATIONS AND ADDITIONS AS NEEDED UTILITY ADJUSTMENTS (POWER). CONTRACTOR WILL BE RESPONSIBLE FOR SUPPLYING AND INSTALLING POWER CONDUITS AND UNITIL POWER WILL PULL THE LINES.
9. ALL COSTS FOR RELOCATING OVERHEAD TELEPHONE UNDERGROUND SHALL BE INCLUDED IN ITEM 1008.42, ALTERATIONS AND ADDITIONS AS NEEDED UTILITY ADJUSTMENTS (TELEPHONE). CONTRACTOR WILL BE RESPONSIBLE FOR SUPPLYING AND INSTALLING TELEPHONE CONDUITS AND FAIRPOINT WILL PULL THEIR LINES.

10. COMCAST SHALL BE RESPONSIBLE FOR ALL COSTS ASSOCIATED WITH PROVIDING SERVICE TO KIMBALL ISLAND.
11. THE GAS LINE LOCATED ON THE DOWNSTREAM FASCIA OF THE EAST BRIDGE IS TO BE RELOCATED UNDERGROUND OVER THE EAST BRIDGE AND EXTENDED TO WATER STREET. UNITIL (GAS) SHALL BE RESPONSIBLE FOR ALL WORK AND COSTS ASSOCIATED WITH RELOCATING THE GAS LINE AND EXTENDING SERVICE TO WATER STREET.
12. ALL COSTS FOR THE SEWER LINE UPGRADES SHALL BE INCLUDED IN ITEM 1008.43, ALTERATIONS AND ADDITIONS AS NEEDED UTILITY ADJUSTMENTS (SEWER).
13. THE TOWN SHALL INSPECT THE WATERLINE DURING EACH PHASE OF CONSTRUCTION. THE CONTRACTOR SHALL NOTIFY THE TOWN WHEN THE WATERLINE IS EXPOSED DURING EACH PHASE.
14. WATER SHALL BE SHUTDOWN FOR THE DURATION OF CONSTRUCTION OF THE ROADWAY WORK. THE CONTRACTOR SHALL BE RESPONSIBLE IN PROVIDING TEMPORARY WATER SERVICES TO KIMBALL ISLAND AT ALL TIMES DURING CONSTRUCTION. THE TEMPORARY SERVICE WILL BE REQUIRED TO BE PHASED TO ACCOMMODATE EACH BRIDGE SHUTDOWN. ALL COSTS ASSOCIATED WITH PROVIDING TEMPORARY WATER SERVICES TO KIMBALL ISLAND SHALL BE INCLUDED IN ITEM 611.99, TEMPORARY WATER AND APPURTENANCES.
15. SEWER SHALL BE SHUT DOWN DURING PHASE I CONSTRUCTION OF THE WEST BRIDGE ROADWAY WORK. THE CONTRACTOR SHALL BE RESPONSIBLE IN PROVIDING TEMPORARY SEWER SERVICES TO KIMBALL ISLAND DURING THIS PHASE. ALL COSTS ASSOCIATED WITH PROVIDING TEMPORARY SEWER SERVICES TO KIMBALL ISLAND SHALL BE INCLUDED IN ITEM 612.99, TEMPORARY SEWER AND APPURTENANCES.
16. GAS SHALL BE SHUTDOWN FOR THE DURATION OF CONSTRUCTION. UNITIL WILL BE RESPONSIBLE FOR PROVIDING TEMPORARY GAS SERVICE TO KIMBALL ISLAND. THE CONTRACTOR SHALL NOTIFY UNITIL 4 WEEKS PRIOR TO REQUIRING THE EXISTING GAS LINE TO BE TAKEN OUT OF SERVICE.

17. REQUIRED UTILITY SEPARATIONS:

POWER CONDUITS SHALL HAVE SHALL HAVE A MINIMUM 12" OF SEPARATION FROM TELEPHONE AND CABLE CONDUITS.

POWER CONDUITS SHALL HAVE A MINIMUM OF 48" HORIZONTAL SEPARATION FOR WATER AND SEWER PARALLEL RUNS AND 12" VERTICAL SEPARATION FOR PERPENDICULAR CROSSINGS.

POWER CONDUITS SHALL HAVE A MINIMUM OF 36" HORIZONTAL SEPARATION FROM GAS LINES.

GAS LINES SHALL HAVE A 24" HORIZONTAL SEPARATION FROM TELEPHONE AND CABLE CONDUITS AND 12" VERTICAL SEPARATION FOR PERPENDICULAR CROSSINGS.

GAS LINES SHALL HAVE A 12" VERTICAL SEPARATION FROM WATER AND SEWER PERPENDICULAR CROSSINGS.

18. PROPOSED SPLICE BOXES SHALL BE LOCATED BY THE UTILITY COMPANIES.
19. EXISTING ABANDONED FAIRPOINT CONDUITS SPAN THE LENGTH OF STRING BRIDGE. THE LOCATION AND SIZE OF CONDUITS ARE UNKNOWN. A PORTION OF THE CONDUITS ARE CRUSHED. CONTRACTOR SHALL COORDINATE WITH FAIRPOINT TO REPAIR CRUSHED CONDUITS AND RUN SERVICE THROUGH THEM.
20. CONTRACTOR SHALL COORDINATE WITH UNTIL POWER FOR THE REMOVAL AND RESETTING OF THE UTILITY POLE SOUTHWEST OF THE BRIDGE.
21. CONTRACTOR SHALL COORDINATE WITH UNTIL POWER AND FAIRPOINT FOR THE REMOVAL OF OVERHEAD WIRES.
22. THE CONTRACTOR SHALL COORDINATE THE LOCATION AND SCHEDULE FOR ALL UTILITY WORK WITH EACH UTILITY COMPANY LISTED ABOVE. CONTRACTOR SHALL NOTIFY EACH UTILITY COMPANY 4 WEEKS PRIOR TO COMMENCEMENT OF UTILITY CONSTRUCTION. CONTRACTOR SHALL ANTICIPATE A MINIMUM OF 2 WEEKS FOR CONSTRUCTION WORK COMPLETED BY EACH UTILITY COMPANY.

ENGINEER				
REV.		DESCRIPTION	DRW. CHKD. BY	DATE
MARCH 2016				
DESIGN BY: JAS				
DRAWN BY: TAG				
CHKD. BY: STU				
SCALE: AS SHOWN				
This document is prepared as an instrument of service and shall remain the property of Hoyle, Tanner. It may not be used, reproduced, disseminated or transferred in any manner, including electronically, for any other purpose than this project, without the written permission of Hoyle, Tanner.				
<div>Hoyle, Tanner & Associates, Inc.</div> <div>150 Dow Street, Manchester, NH 03101-1227 Tel (603) 669-5555 - Fax (603) 669-4168 www.hoyletanner.com</div>				
TOWN OF EXETER EXETER, NEW HAMPSHIRE				
STRING BRIDGE OVER EXETER RIVER				
UTILITY DETAILS (1 OF 2)				
PROJECT NO.: 095222				
FILE NAME: 095222Util-Dtls				
MODEL NAME: 095222Util-Dtls1				
SHEET NO.				
28				
SHEET 28 OF 42				